

EARLY ACTION PROTOCOL ACTIVATION

Guatemala | Drought

9 June 2026



Guatemalan Red Cross volunteers collect community registration data in communities in Jalapa department as part of drought EAP readiness activities. Source: GRC.

EAP №: EAP2023GT03	Operation №: MDRGT023	EAP approved: 23/05/2024	EAP revised timeframe: 23/05/2024 – 20/09/2026
Trigger date: 04/06/2026	Early action lead time: 2-3 months	Early action timeframe: 3 Months	

Total budget: 546,439 CHF
To assist: 10,000 people

EARLY ACTION PROTOCOL ACTIVATION

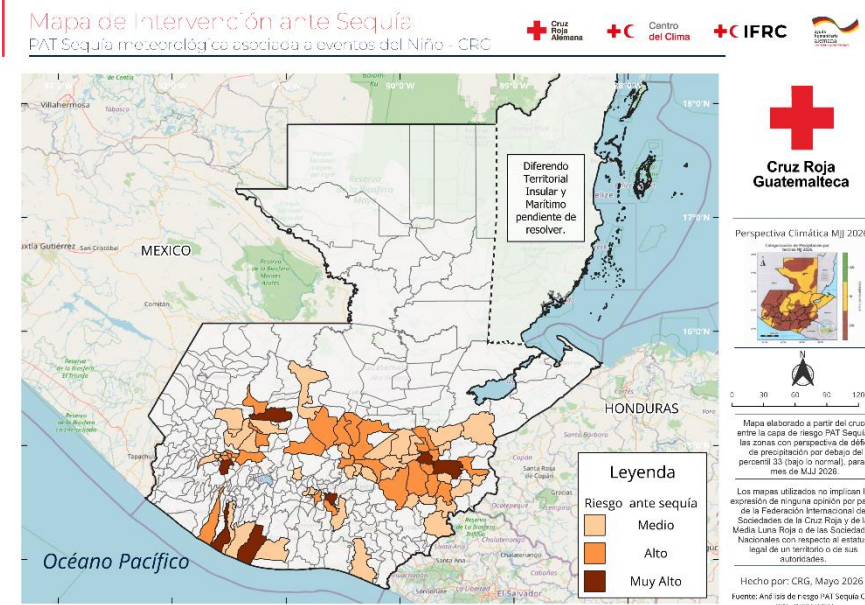


Figure 1: Map of municipalities with meteorological drought risk indices for Guatemala.

Activation Overview

The Guatemalan Red Cross has activated its Early Action Protocol for drought.

Based on the monitoring and technical analysis conducted by the National Institute of Seismology, Volcanology, Meteorology and Hydrology (INSIVUMEH), the activation of the Early Action Protocol (EAP) for drought is hereby reported, due to the fulfilment of the two triggers established in the approved protocol.

The activation is supported by the following technical criteria:

First trigger: INSIVUMEH forecasts the occurrence of an El Niño event in the Niño 3.4 region for the next three months, with a 70 per cent probability, according to the forecasts issued by the International Research Institute for Climate and Society (IRI) from June onwards.

Second trigger: INSIVUMEH has issued its seasonal precipitation forecast for the June-July-August period, indicating a 50 per cent probability that rainfall will be below the first tercile, or the 33rd percentile. This represents below-normal precipitation conditions and a significant increase in drought risk in the prioritized areas.

According to INSIVUMEH's technical analysis, more than half of the national territory shows below-normal precipitation outlooks for the June-July-August quarter, particularly in the Dry Corridor and other areas vulnerable to water deficits. This situation, combined with the high probability of conditions associated with the El Niño phenomenon developing, increases the risk of impacts on food security, agricultural livelihoods and access to water for the most vulnerable populations.

In view of the above, the Early Action Protocol is officially activated, with the objective of implementing anticipatory actions aimed at reducing humanitarian impacts on the most vulnerable populations, particularly in relation to food security, livelihoods, access to water, health and protection.

Targeting of early action

The planned actions will be implemented in coordination with national authorities, humanitarian actors and prioritized communities, in accordance with the operational procedures and coordination mechanisms established in the EAP. The intervention will target the most vulnerable families that may be affected by the forecasted drought conditions, prioritizing those located in areas identified as having the highest exposure and vulnerability according to the protocol's risk analysis.



The implementation of anticipatory actions will help strengthen community response capacity, reduce livelihood losses and contribute to mitigating the humanitarian impacts associated with the forecasted climate conditions.

The prioritized areas were identified by overlaying the EAP drought risk layer, which resulted from the integrated analysis of hazard, exposure, vulnerability and response capacity, with the MJJ climate forecast map developed by INSIVUMEH.


The selected municipalities correspond to those classified as having medium, high and very high-risk levels in the EAP risk analysis, and which are also located within areas where rainfall is projected to be below the 33rd percentile for the May-June-July period. The municipalities classified as very high risk are Chiquimula and Sacapulas, Quiché, while the municipalities classified as high risk are Jalapa, Quetzaltenango and Retalhuleu.

Early Action Overview

PLANNED OPERATIONS

 Multi-purpose cash	Female:	3,966	280,074 CHF
	Male:	3,734	AP Code: 081
Indicator:	7,700 people reached with multi-purpose cash in advance of a hazard.		
Priority Early Actions:	<ol style="list-style-type: none"> 1. Registration and/or validation of families to receive multi-purpose cash (MPC) support. 2. MPC distribution. 3. Cost of assigning codes and/or cards. 4. Per diem (food and mobilization) for staff and volunteers for MPC distribution. 5. Exit and post-distribution survey (1 to 3 months later). 		
 Water, Sanitation and Hygiene	Female:	1,803	2,459 CHF
	Male:	1,697	AP Code: 110, 111
Indicator:	3,500 people reached with WASH interventions in advance of a hazard.		
Priority Early Actions:	<ol style="list-style-type: none"> 1. Lodging for staff and volunteers for distribution. 2. Per diem (food and mobilization) for staff and volunteers for distribution. 		
 Risk Reduction, climate adaptation and Recovery	Female:	7,210	3,688 CHF
	Male:	6,790	AP Code: 101, 103, 105, 106
Indicator:	14,000 people reached with risk reduction and/or climate adaptation interventions in advance of a hazard.		
Priority Early Actions:	<ol style="list-style-type: none"> 1. Dissemination of audiovisual material in the media and social networks. 		

Enabling approaches

	Secretariat Services		2,857 CHF
			AP Code: 122
Objective:			
Priority Early Actions:		1. Activation support visits. 2. Banking costs.	

	National Society Strengthening		7,217 CHF
			AP Code: 124,125,126
Objective:			
Priority Early Actions:		1. Communication (telephone, internet, etc.) 2. Follow-up visits to activation activities. 3. Lessons learned workshop. 4. Insurance for volunteers.	

Contact information

For further information, specifically related to this operation please contact:

In the Guatemalan Red Cross

- **General Director:** Virna Villela, virna.villeda@cruzroja.gt
- **Operational coordination:** Teresa Marroquín, Disaster Risk Management Director, teresa.marroquin@cruzroja.gt

In the IFRC

- **IFRC Country Cluster Delegation:** Marjorie Soto Franco, Head of Country Cluster Delegation Central America, marjorie.sotofranco@ifrc.org, +504 93007044
- **IFRC Regional Office:** Maria Martha Tuna, Manager, Operations, Evolving Crises and Disaster, maria.tuna@ifrc.org
- **IFRC Geneva DREF Team:** Malika Noisette, DREF AA Senior Officer, malika.noisette@ifrc.org

Reference



Click here for:

- [EAP Summary and budget](#)
- [Annual reports from previous years](#)